

LUMIGEN[®] APS-5 CHEMILUMINESCENT SUBSTRATE

Features

Excellent Sensitivity

10^{-20} moles Alkaline Phosphatase can be detected.

Rapid Peak Intensity

Reduced assay time and increased throughput.

Linear Calibration Curves

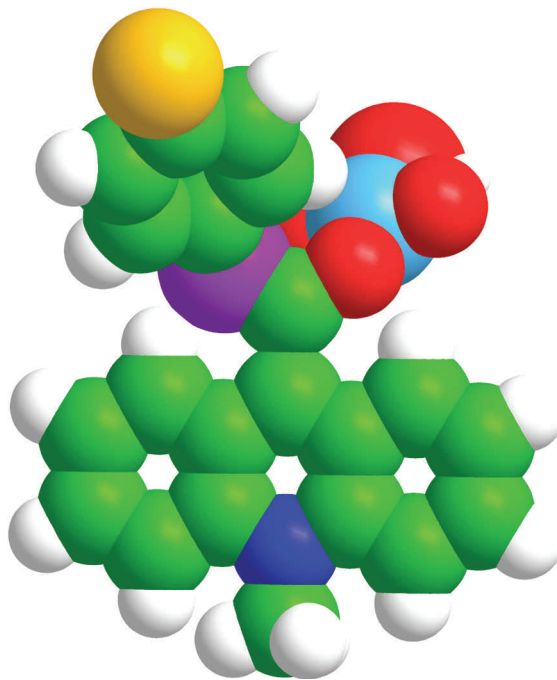
Slope of log-log plots equal 1.0 - One order of magnitude more enzyme yields one order of magnitude more light. Light intensities can be read at any time to produce linear calibration curves.

Sustained Luminescence

Timing is not critical. Sustained signal duration on membranes allows convenient imaging.

Temperature Insensitive

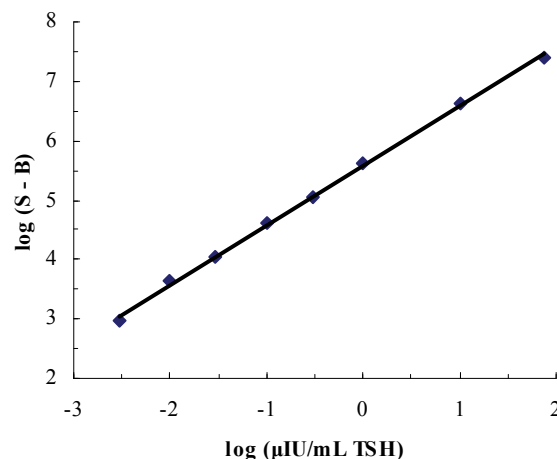
Analytical results are insensitive to temperature from 22°C - 35°C reducing the need for precise temperature control.



Lumigen APS-5 utilizes a unique technology for the chemiluminescent detection of alkaline phosphatase conjugates which combines excellent sensitivity with ease of use. Reaction of the acridan substrate with an AP label rapidly produces sustained high-intensity chemiluminescence. Lumigen APS-5 is ideally suited for solution assays of phosphatase activity and for phosphatase-linked immunoassays.

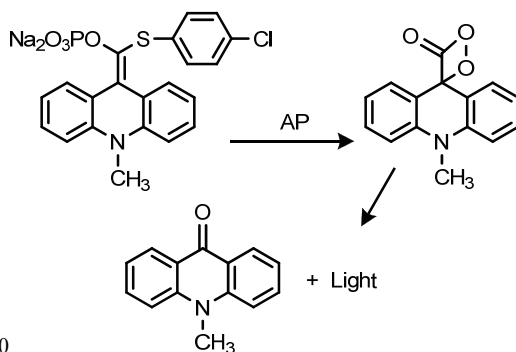
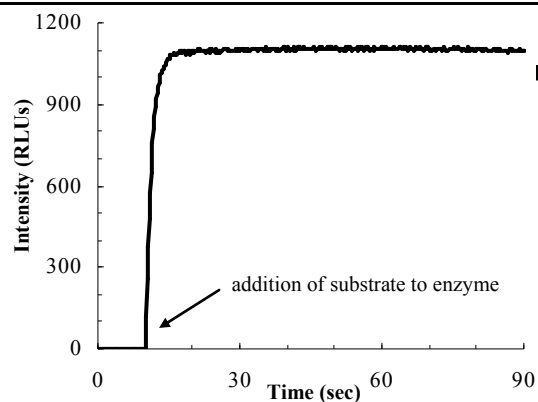
LINEAR CALIBRATION CURVE

A sandwich immunoassay for thyroid stimulating hormone (TSH) performed with an Immulite Third Generation TSH Assay kit yielded a linear plot from 0.003 to 75 μ IU/mL with excellent assay precision.

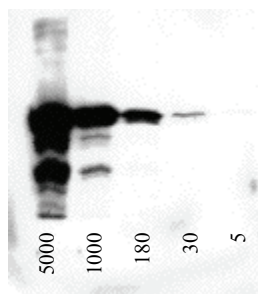


LUMIGEN APS-5 CHEMILUMINESCENT SUBSTRATE

RAPID PEAK INTENSITY



BLOTTING APPLICATIONS



pg of transferrin

This image from a Western blot analysis of human transferrin was made after a 10 min incubation of the PVDF membrane with Lumigen APS-5 with a 1 min exposure to X-OMAT film. Equivalent results were obtained using nitrocellulose membranes. No other chemiluminescent reagent allows complete interchangeability of blotting membrane.

PRODUCT SPECIFICATIONS

Enzyme	Alkaline Phosphatase
Application	ELISA / Blotting
Analytical Sensitivity	10^{-20} moles AP
Storage Conditions	2-8° C; Store in amber bottle
Stability	1 Year at 2-8° C, 7 Days at Room Temp.
Working Solution	1 Part, Ready to Use Solution

ORDERING INFORMATION

Description	Cat. No.
Lumigen APS-5 (5 mL)	AP5-05
Lumigen APS-5 (10 mL)	AP5-10
Lumigen APS-5 (30 mL)	AP5-30
Lumigen APS-5 (100 mL)	AP5-101
Lumigen APS-5 (1 L)	AP5-1000

CONTACT INFORMATION



22900 West Eight Mile Road
Southfield, Michigan 48033
Tel: 248.351.5600
Fax: 248.351.0518
Email: marketing@lumigen.com

Visit www.lumigen.com for more information

Lumigen APS-5