

LUMIGEN HYPERBLU™ CHEMILUMINESCENT SUBSTRATE

Features

Excellent Sensitivity

A sensitive substrate for the direct chemiluminescent detection of hydrogen peroxide.

Linear Dynamic Range

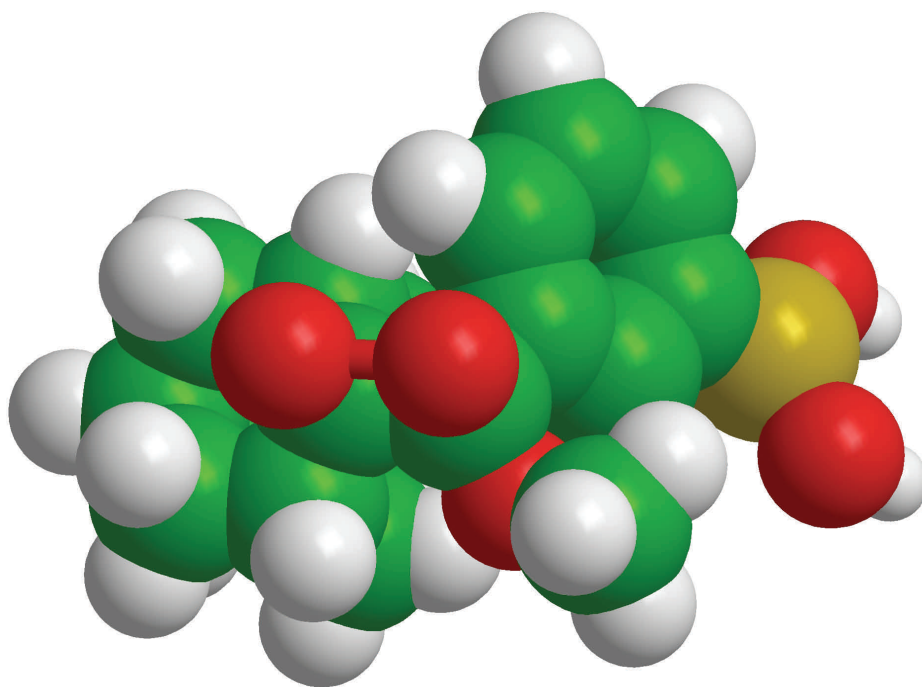
Slope of log-log plots equal 1.0 - One order of magnitude more enzyme yields one order of magnitude more light.

Sustained Luminescence

The luminescence intensity at any time point is a direct measure of the concentration of peroxide.

Flexible

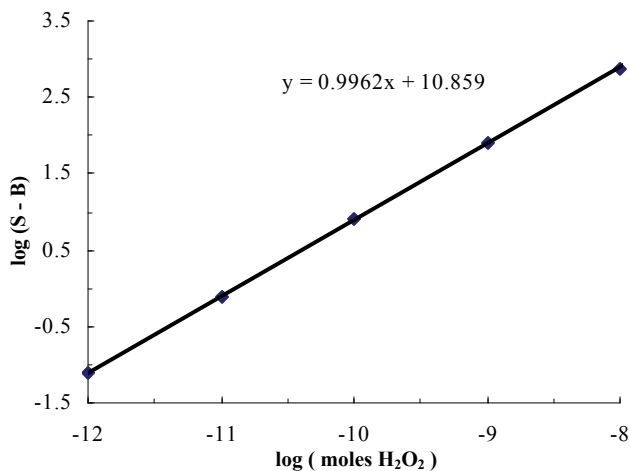
Can be applied to the detection of peroxide, antibodies, oxidase enzymes and substrates.



Lumigen HyPerBlu is a novel substrate for the direct chemiluminescent detection of hydrogen peroxide. Reaction of the substrate with hydrogen peroxide rapidly generates sustained high-intensity luminescence for maximum detection sensitivity in solution assays. Coupled with oxidases, HyPerBlu allows one step indirect detection of oxidases or their substrates.

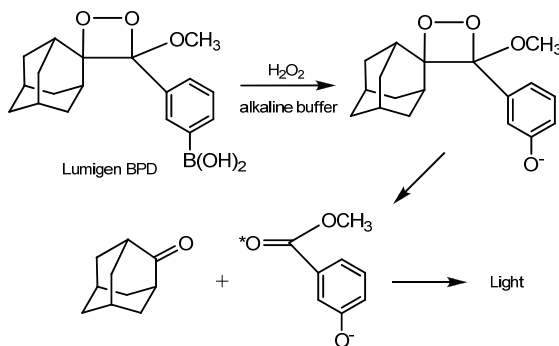
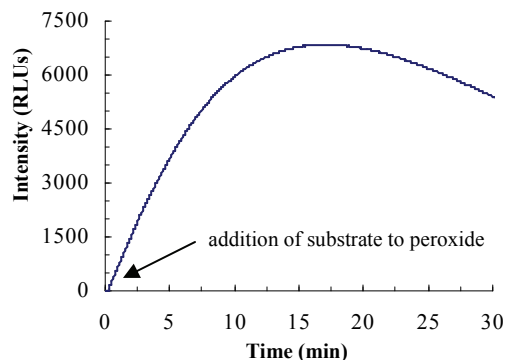
EXCELLENT SENSITIVITY

Lumigen HyPerBlu has a broad dynamic range with bright, sustained chemiluminescence in a ready-to-use reagent to provide unmatched convenience to the user.

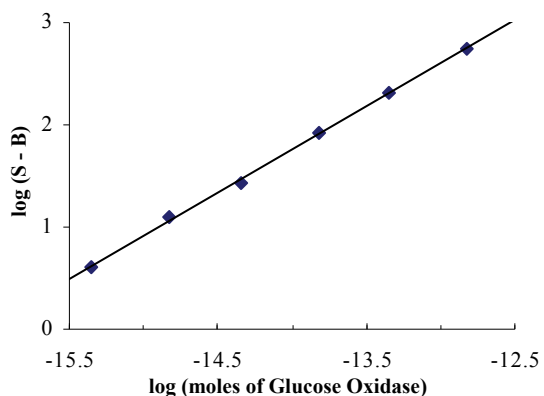


LUMIGEN HYPERBLU CHEMILUMINESCENT SUBSTRATE

RAPID LIGHT GENERATION



USEFUL FOR OXIDASE ASSAYS



HyPerBlu can be used for the one step detection of oxidases or oxidase substrates that produce free hydrogen peroxide. In this example, HyPerBlu is used to quantify glucose oxidase. The data represent triplicate averages of chemiluminescence intensities for various amounts of glucose oxidase after a 22 minute incubation in 0.1 M glucose in 0.3 M tris buffer at pH 9.35. Glucose itself can be similarly quantified by incubating with a fixed glucose oxidase concentration.

PRODUCT SPECIFICATIONS

Can be used to detect:	Hydrogen Peroxide (directly) Glucose or Glucose Oxidase (indirectly)
Analytical Sensitivity	10^{-7} molar Hydrogen Peroxide
Storage Conditions	2-8° C; Store in amber bottle
Working Solution	1 Part, Ready to Use Formulation

ORDERING INFORMATION

Description	Cat. No.
Lumigen HyPerBlu (100 mL)	HPB-100

CONTACT INFORMATION



22900 West Eight Mile Road
Southfield, Michigan 48033
Tel: 248.351.5600

Fax: 248.351.0518

Email: marketing@lumigen.com

Visit www.lumigen.com for more information

Lumigen HyPerBlu™