

LUMIGEN PS-ATTO[®] CHEMILUMINESCENT SUBSTRATE

Features

Excellent Sensitivity

The most sensitive substrate for the detection of HRP. 10^{-21} moles HRP can be detected.

Rapid Peak Intensity

Reduced assay time and increased throughput.

Linear Calibration Curves

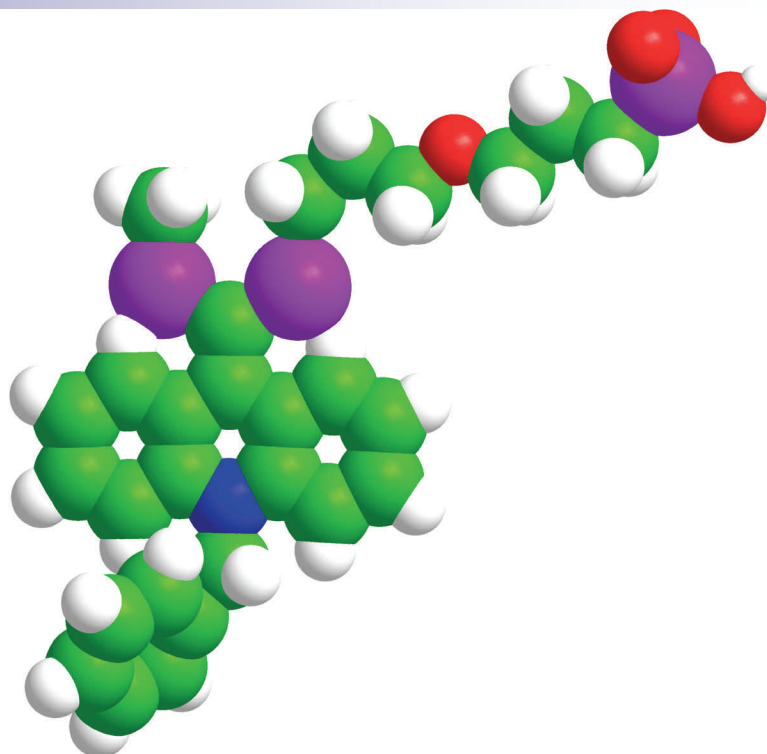
Slope of log-log plots equal 1.0 - One order of magnitude more enzyme yields one order of magnitude more light. Light intensities can be read at any time to produce linear calibration curves.

Sustained Luminescence

Timing is not critical. Sustained signal duration over several hours allows convenient imaging.

Temperature Insensitive

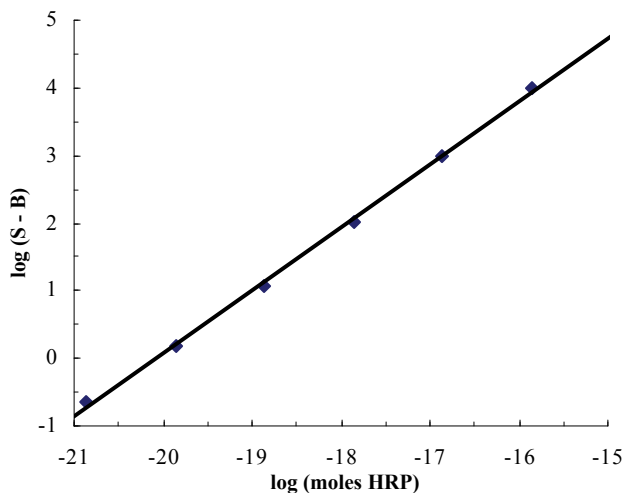
Analytical results are insensitive to temperature from 22°C - 35°C reducing the need for precise temperature control.



Lumigen PS-atto is a novel substrate for the chemiluminescent detection of HRP conjugates. Reaction of the substrate with an HRP label rapidly generates sustained high-intensity luminescence for maximum detection sensitivity in solution assays.

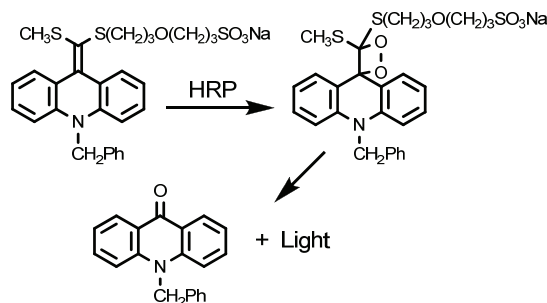
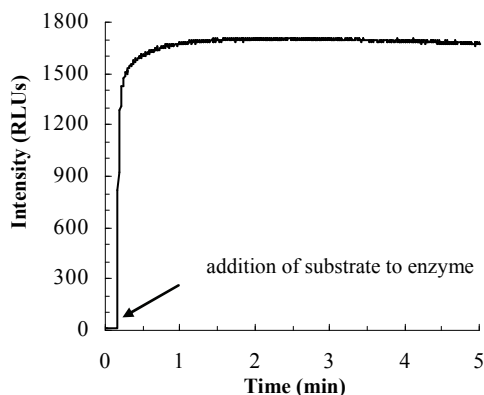
EXCELLENT SENSITIVITY

Lumigen PS-atto couples a broad dynamic range with rapid generation of sustained luminescence and superior storage stability to provide unmatched convenience to the user.

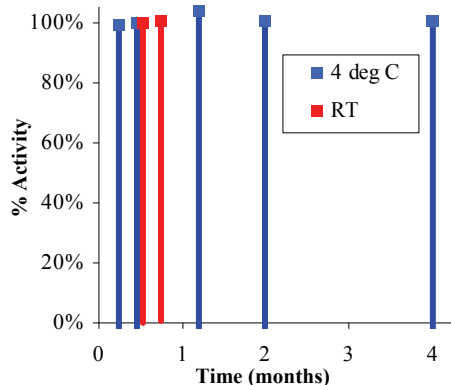


LUMIGEN PS-ATTO CHEMILUMINESCENT SUBSTRATE

RAPID PEAK INTENSITY



UNSURPASSED STABILITY



An important and unique feature of Lumigen PS-atto is its extended storage stability. The working solution prepared by 1:1 mixing of aqueous solutions A and B is stable at room temperature for at least three weeks and at 4°C for four months. Lumigen PS-atto is the only peroxidase substrate that permits the working solution to be stored and used on an instrument with one injector.

PRODUCT SPECIFICATIONS

Enzyme	Horseshoe Peroxidase
Application	ELISA
Analytical Sensitivity	10^{-21} moles HRP
Storage Conditions	2-8° C; Store in amber bottle
Stability	1 Year stored at 2-8° C
Working Solution	2 Part solution (A & B); Stability of working solution: 21 Days at Room Temperature, 4 months at 4° C

ORDERING INFORMATION

Description	Cat. No.
Lumigen PS-atto (100 mL; 50 mL A & 50 mL B)	PSA-100
Lumigen PS-atto (1000 mL; 500 mL A & 500 mL B)	PSA-1000
Lumigen PS-atto (2000 mL; 1000 mL A & 1000 mL B)	PSA-2000

CONTACT INFORMATION



22900 West Eight Mile Road
Southfield, Michigan 48033
Tel: 248.351.5600
Fax: 248.351.0518

Email: marketing@lumigen.com

Visit www.lumigen.com for more information

Lumigen PS-atto